

LOUISIANAVIEW REMOTE SENSING ACTIVITIES 2015 - 2016



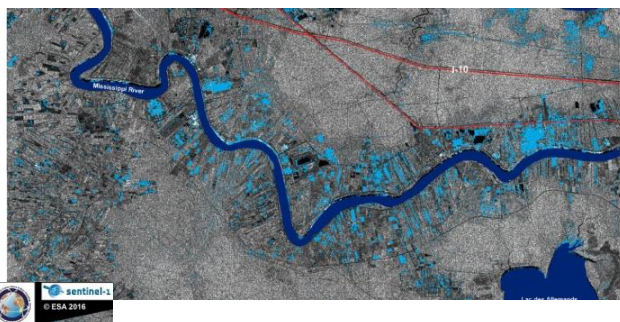
PROMOTING THE BENEFITS OF REMOTE SENSING SCIENCE AND APPLICATIONS

Historic Louisiana Floodingsensing the water rise!

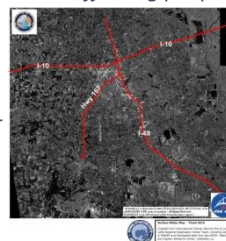
LouisianaView (LAView) responded to the Louisiana/Texas floods in March and May of 2016 and the Louisiana flood of August 2016. LouisianaView team members coordinated the activation of the International Charter as the state responded to each of these events. Working with state and federal consortium members, while supporting the response efforts of the Louisiana Army National Guard and State Emergency Response groups, LaView teamed forces with remote sensing specialist from the USGS Water & Aquatics Research Center and the TexasView consortium to analyze and provide Radar/Optical flood data to geospatial first responders.



Pictured above and below are images showing the extent of damaging high water during the 2016 floods affecting people, property and livestock.



Imagery acquired through the International Charter and processed by members of the LaView/USGS team.



BENEFITS TO LOUISIANA

Louisiana Hurricane Season GeoSpatial Data Mining Workshop



This annual workshop, held in early June each year, is now entering its seventeenth year. Through the cooperation of LouisianaView consortium members and co-sponsored with local USGS representatives, this workshop is offered free to those in Louisiana and surrounding states interested in up-to-date information on data availability for the geospatial emergency responder. Forty-Five (45) Geospatial First Responders attended this workshop held June 9, 2016 at the Regional Application Center in Lafayette, Louisiana.

During the workshop of 2016, representatives of the International Charter were on hand to address requests for imagery by geospatial first responders of the State agencies responding to the Louisiana/Texas floods. This workshop has proved again and again what a cohesive network of geospatial data responders can mean to the inhabitants and economic base for the state of Louisiana.

LouisianaView is a member of the AmericaView Consortium, a nationally coordinated network of academic, agency, non-profit, and industry partners and cooperators that share the vision of promoting and supporting the use of remote sensing data and technology within each state.



AmericaView Website:

www.AmericaView.org

Roberta Lenczowski, Executive Director:

roberta.lenczowski@sbcglobal.net

Chris McGinty, Program Manager:

chris.mcinty@americaview.org

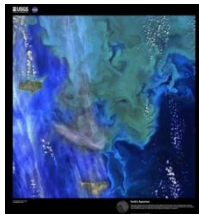
Jarlath O'Neil-Dunne, Board Chair:

Jarlath.ONeil-Dunne@uvm.edu

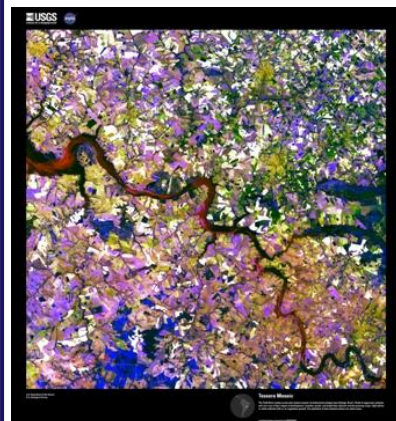


On display at the Manship Art Gallery in Baton Rouge, La. as part of the downtown exhibit from April to July, Spring 2016.

Intimate Science – *the Intersection of*
Science,
Art and
Technology

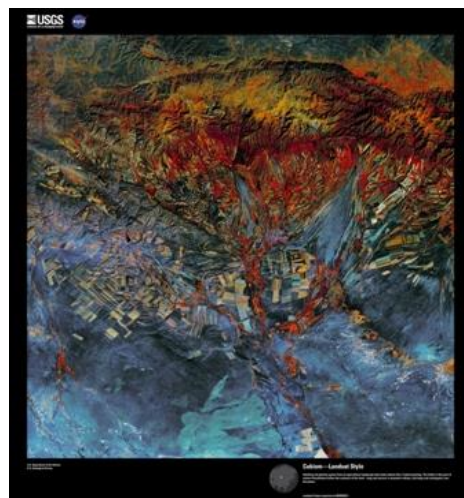


*All anyone had to do
 was bring along their Imagination!*



In this exhibition, working with the USGS "Earth As Art" program, utilizing NASA Landsat Satellite Imagery we comprised images to excite the imagination and entertain creative fancies. Over 40 Images from Satellite systems were displayed for multiple gala events and school visitations during 2015 and 2016, entertaining a host with images that depict the science of the region and invoke the art of the earth's natural landscape.

In much of the work we do, images from Satellites play a large role in the way we study climate change, weather patterns, natural and man-made disasters, timber stand health and man-kinds development and use of the Earth's resources. In studying these images we also find many of the fundamental elements of fine art such as tonal quality, image composition and balance.



LOUISIANA CONTINUES EARTH AS ART EDUCATION AND OUTREACH

Earth As Art has been a theme for the LouisianaView program over the course of 2015-2016, visiting many areas across the state of Louisiana bringing science and art together for the viewing public. The Exhibit participated in Earth Observation Day, exhibited at science festivals, the state Remote Sensing Conference and a 4 month viewing at the Manship Art Gallery in downtown Baton Rouge.



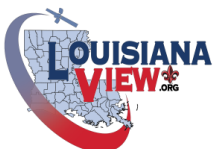
LouisianaView Principal Investigator:

R. Brent Yantis

University of Louisiana at Lafayette

337-344-8882

rby7623@louisiana.edu



<http://www.louisianaview.org>



[Facebook.com/LouisianaView](https://www.facebook.com/LouisianaView)

Major funding for the AmericaView Consortium is provided by the U.S. Geological Survey through Grant Number G14AP00002.